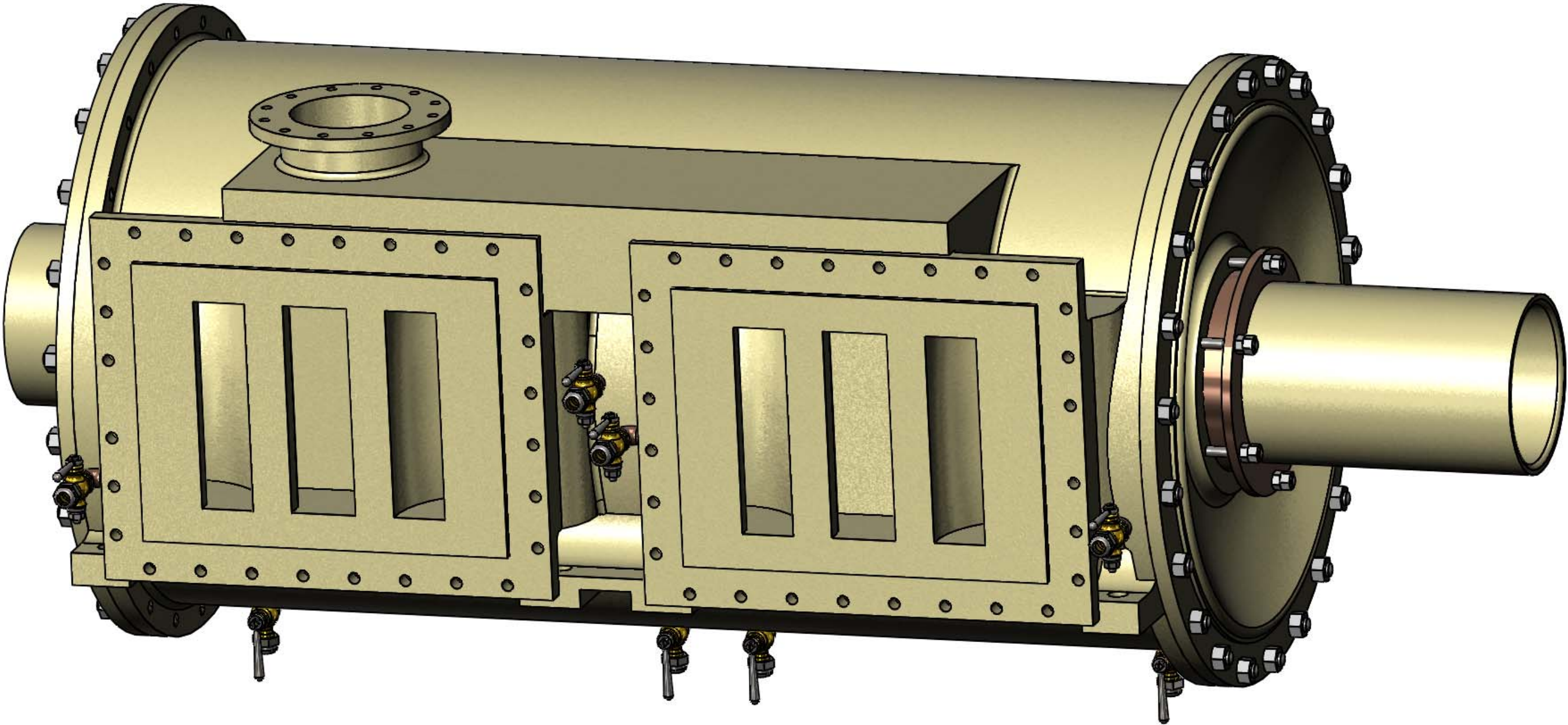


U.S.S. Monitor Steam Engine

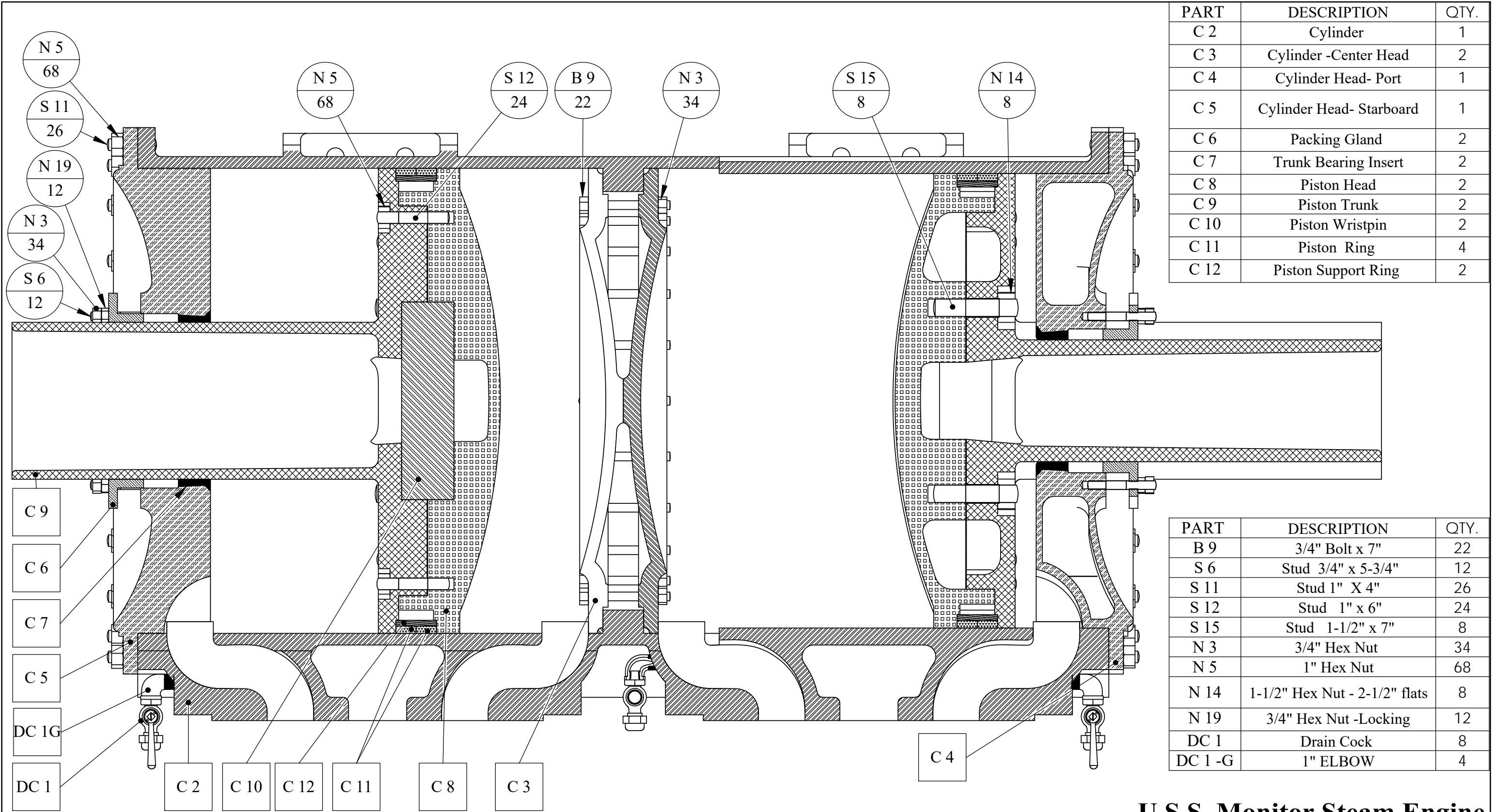
Material	Drawn By - Date RWC 12-2018	Sub-Assembly Cylinder Assembly
Weight (Lbs) 12140.74	Description Cylinder-Heads & Piston Assembly	
Scale 1:12		
Part # C 1		



**PICTORIAL VIEW OF THE CYLINDER, HEADS, AND PISTONS
SHOWING DRAIN COCKS AND FASTENERS USED IN THIS
ASSEMBLY**

U.S.S. Monitor Steam Engine

Material	Drawn By - Date RWC 12-2018	Sub-Assembly CYLINDER ASSEMBLY
Weight (Lbs) 12140.74	Description <div>Cylinder-Heads & Piston Assembly</div> <div>SHEET 2 OF 4</div>	
Scale 1:8		
Part # C 1		



MOUNTING FASTENERS BELOW MAY NOT BE SHOWN

BILL OF MATERIALS

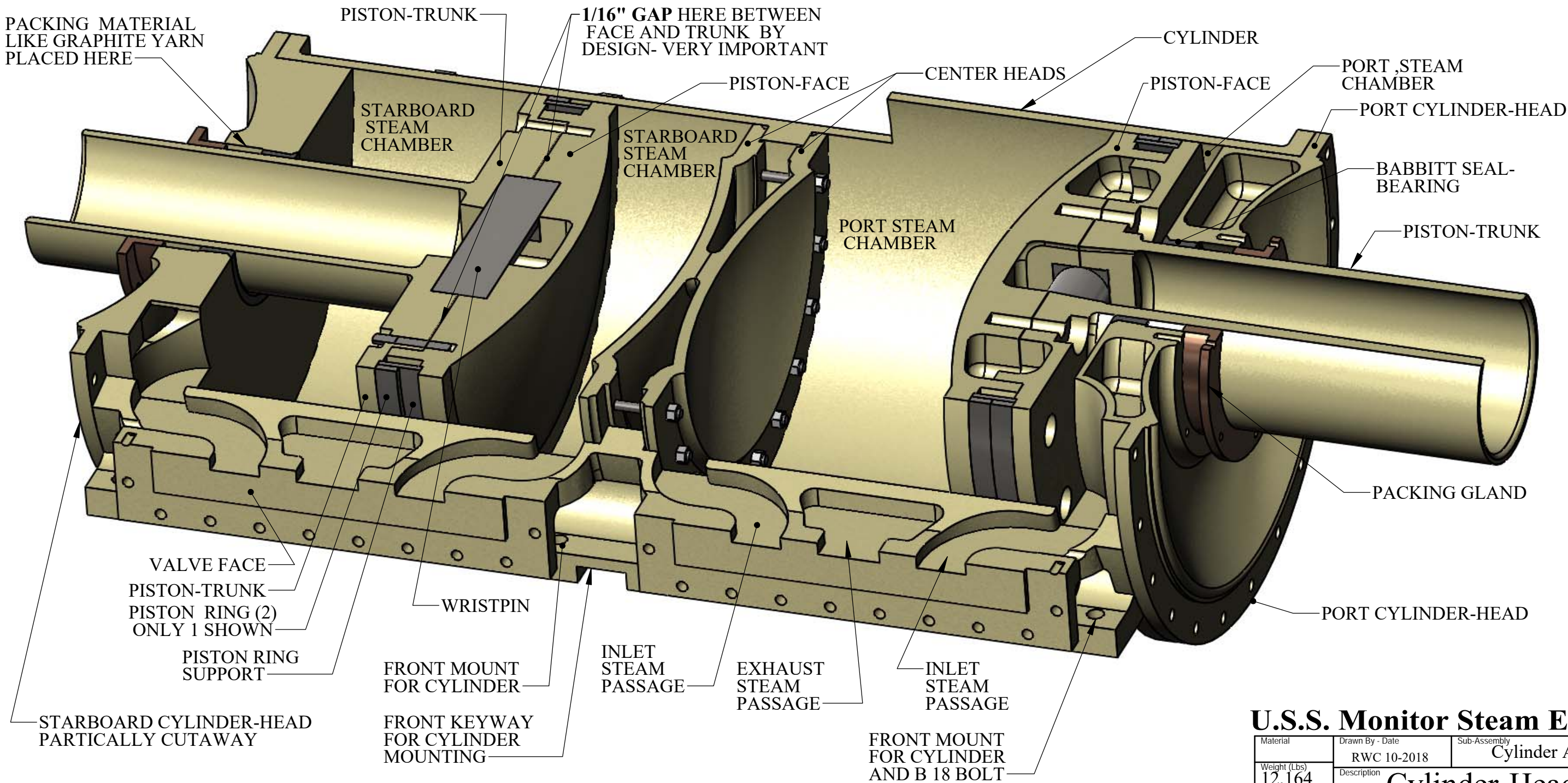
U.S.S. Monitor Steam Engine

Material	Drawn By - Date	Sub-Assembly
Weight (Lbs)	RWC 12-2018	Cylinder Assembly
12,164	Description	Cylinder-Heads & Piston Assembly
Scale		
1:8		
Part #		
C 1		

SHEET 4 OF 4

MAJOR CUTAWAY SHOWING COMPONENTS OF THE MONITOR'S CYLINDER

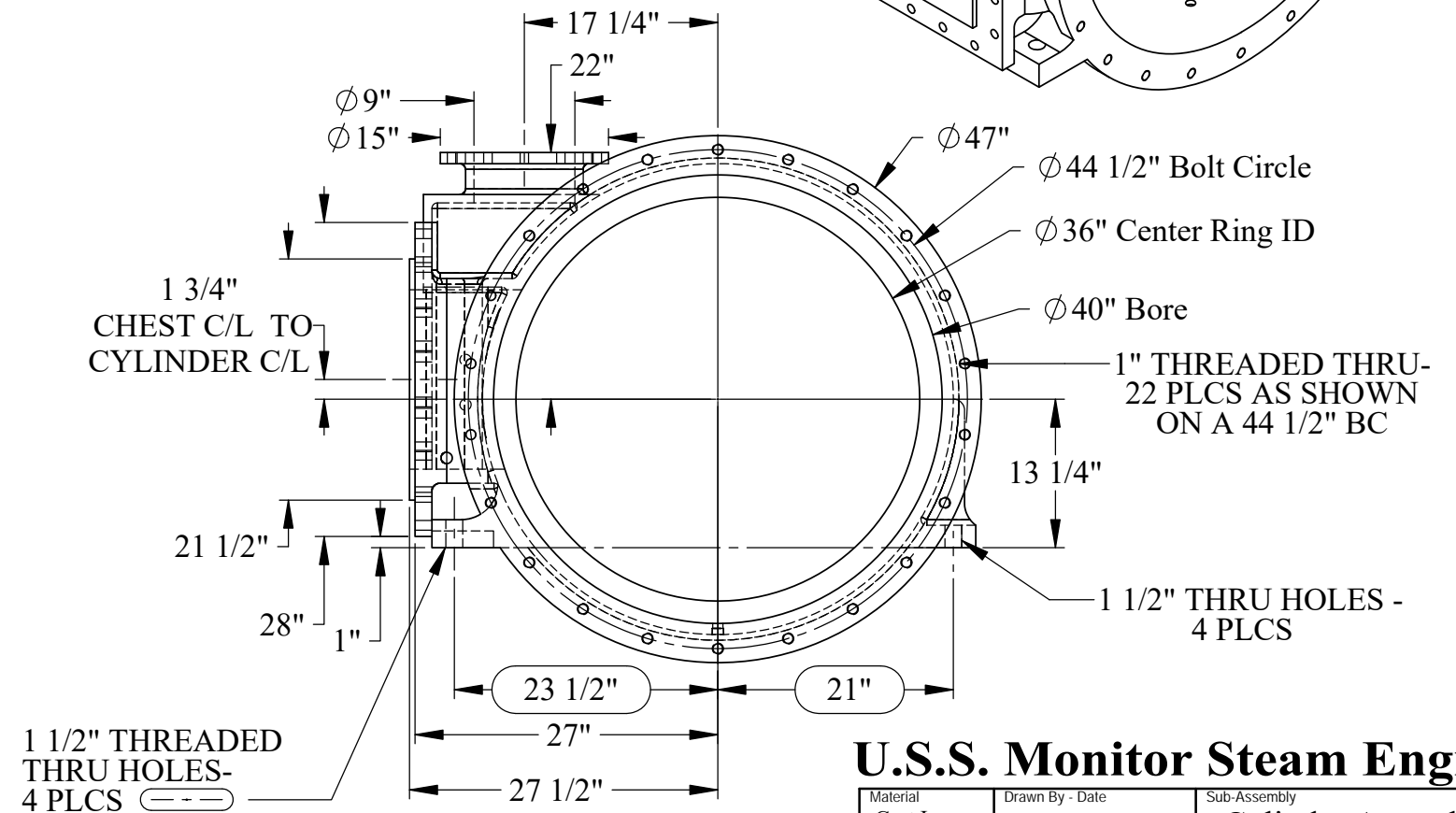
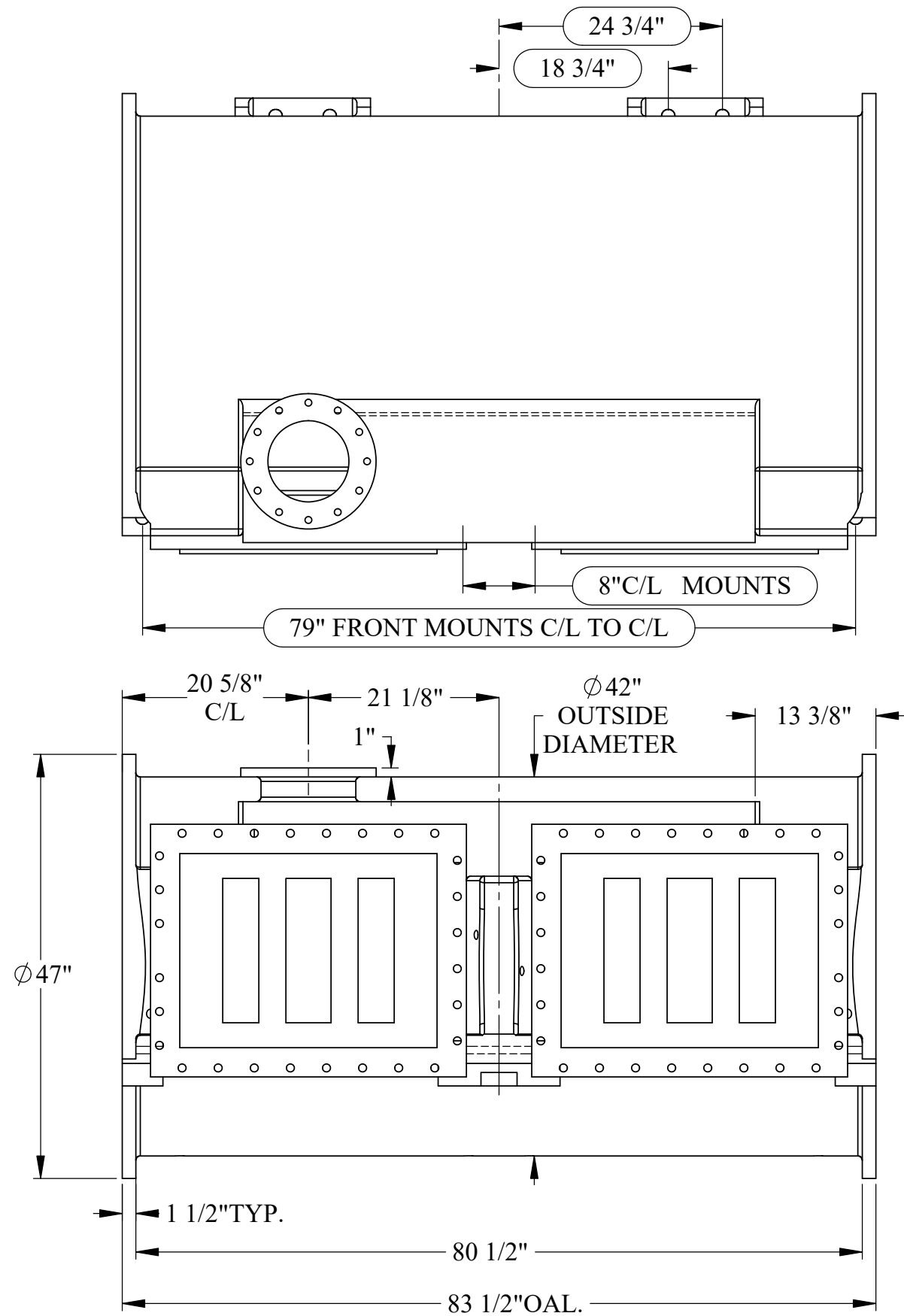
MOST FASTENERS AND INDICATOR COCKS NOT SHOWN FOR CLARITY



PISTON RODS NOT SHOWN AS THEY ARE ANOTHER ASSEMBLY

U.S.S. Monitor Steam Engine

Material	Drawn By - Date	Sub-Assembly
Weight (Lbs)	RWC 10-2018	Cylinder Assembly
Scale	Description	Cylinder-Heads & Piston Assembly
1:8		
Part #		
C 1		



U.S.S. Monitor Steam Engine

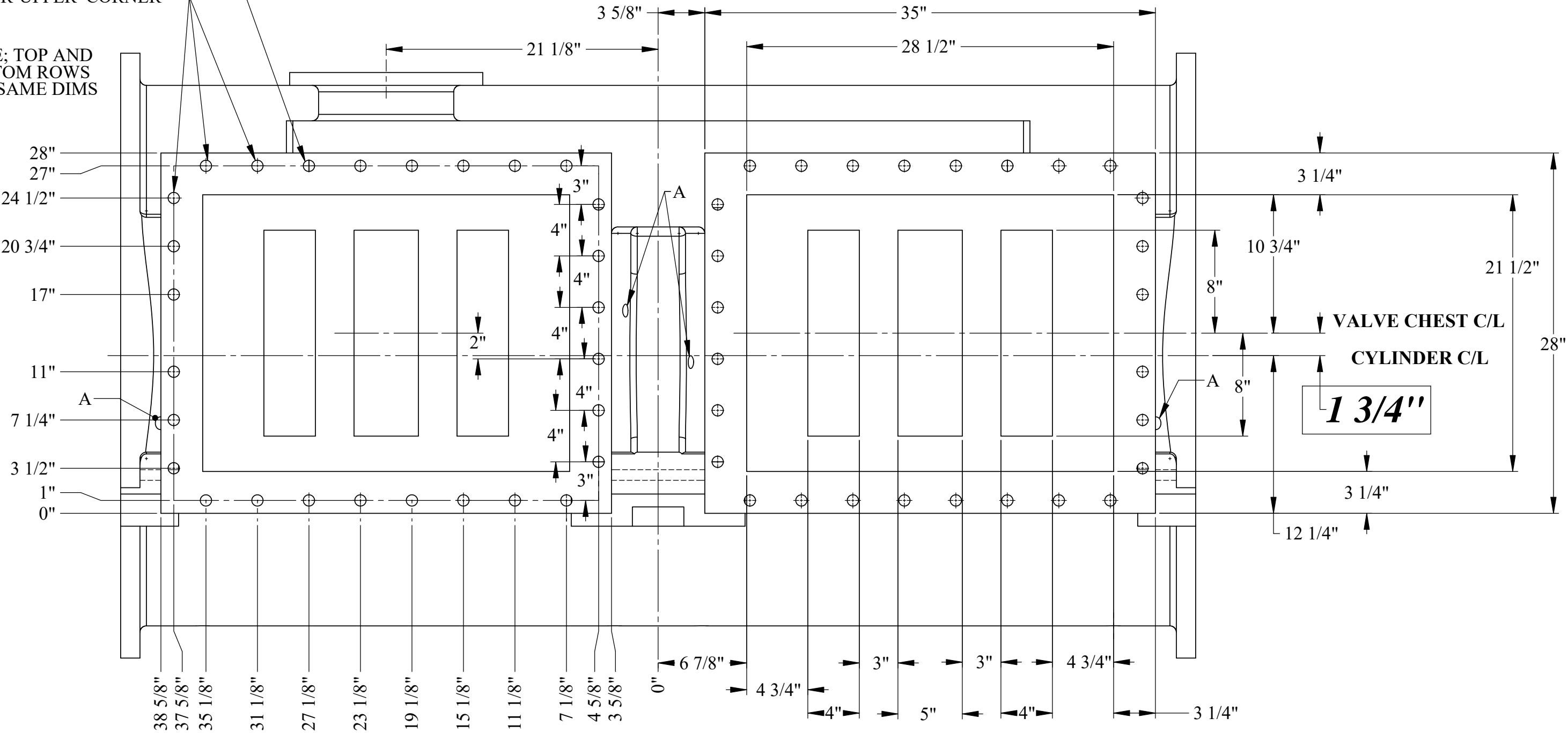
Material Cast Iron	Drawn By - Date RWC 12-2018	Sub-Assembly Cylinder Assembly
Weight (Lbs) 5088.961	Description <h2>Cylinder</h2> <p>SHEET 1 OF 4</p>	
Scale 1:16		
Part # C 2		

NOTE:
VALVE CHESTS AND VALVE FACES
ARE MIRROR IMAGES OF EACH OTHER

NOTE : 25 - 7/8 DIA. "THREADED
HOLES 1-1/2" DP. AS SHOWN

NOTE: 7/8 " THRU HOLES
3-ONLY-AS SHOWN IN
OUTER-UPPER CORNER

NOTE; TOP AND
BOTTOM ROWS
ARE SAME DIMS



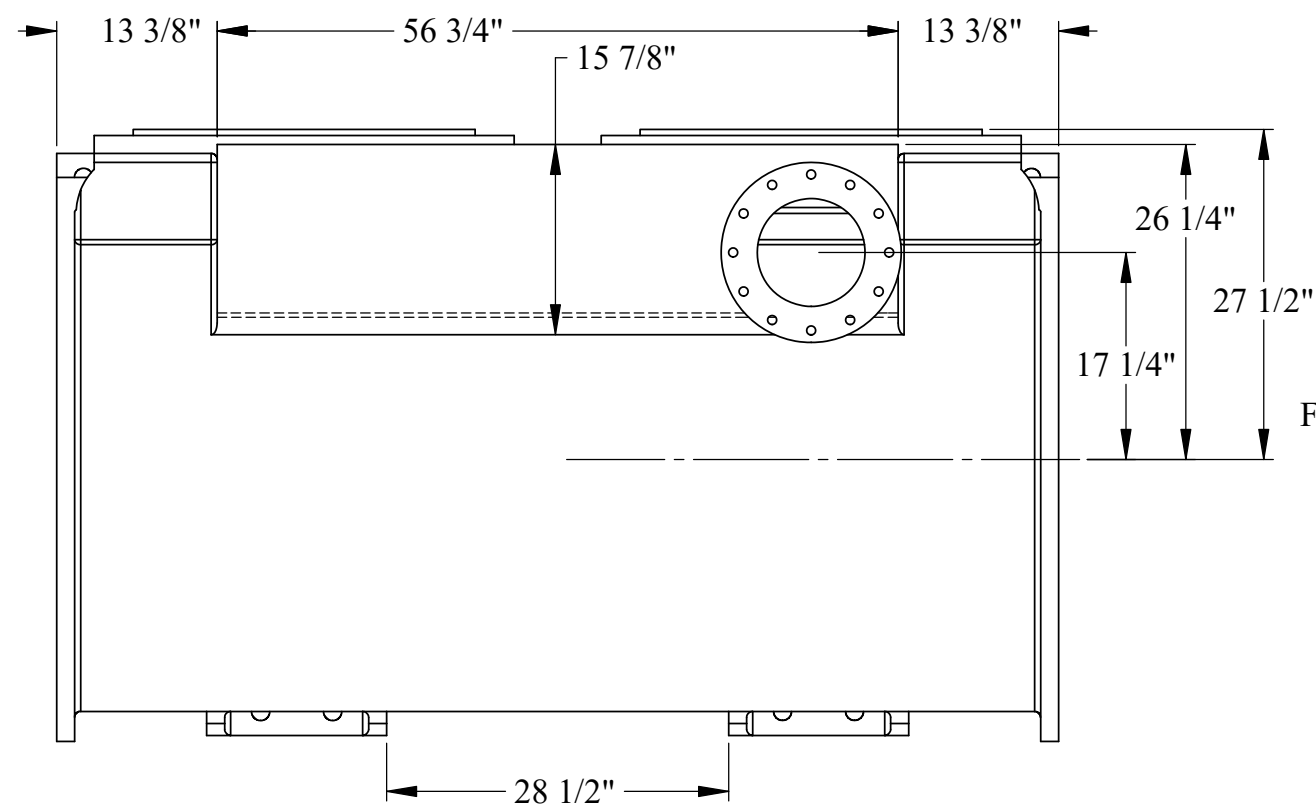
TOP AND BOTTOM CHEST HOLES
ARE ALIGNED TO SAME DIMENSIONS

NOTE: -A-
4- 1 " THREADED HOLES
USED FOR INDICATOR
COCKS -THRU TO INTAKE
STEAM PASSAGEWAY
NO DETAILS

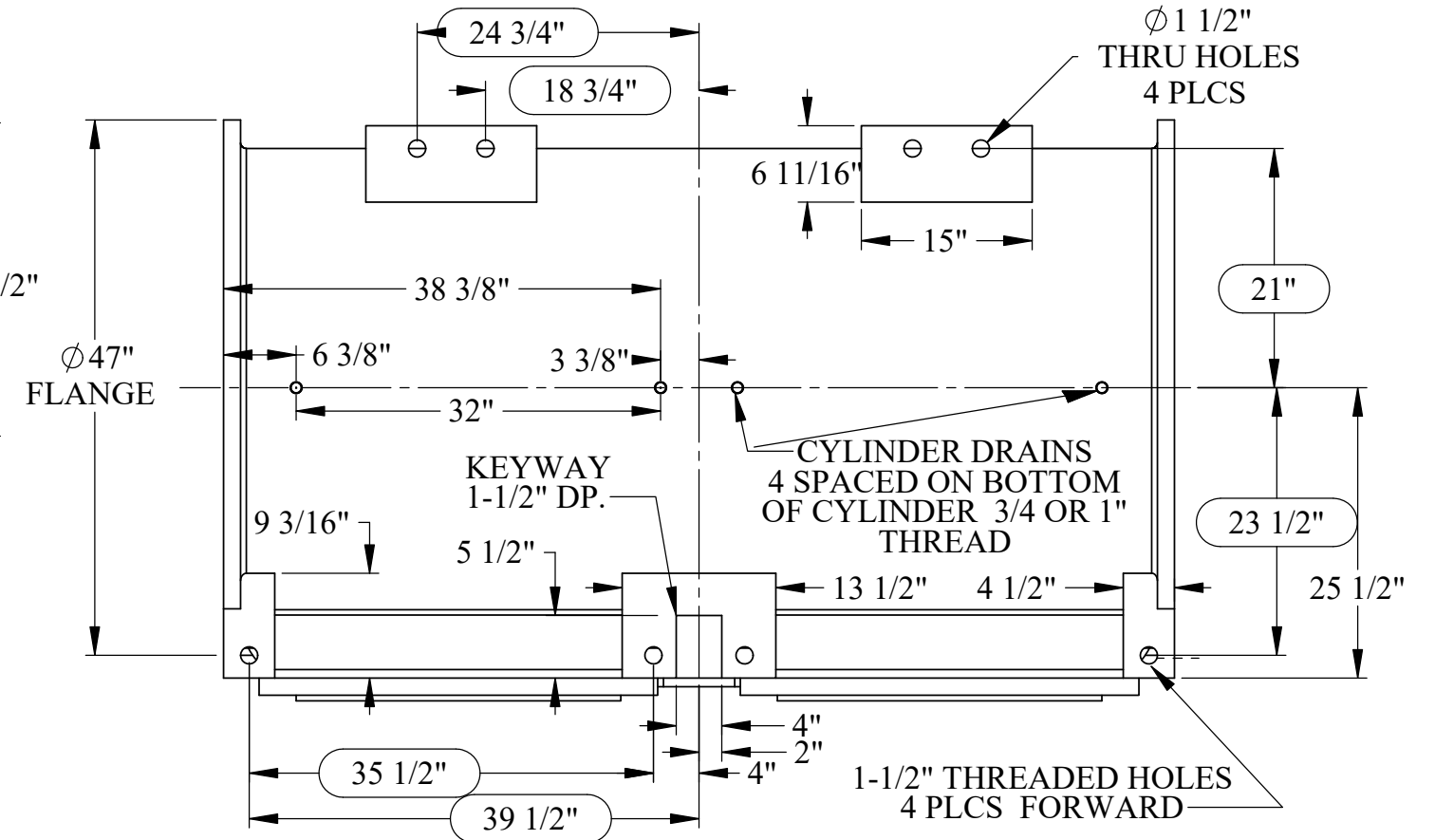
VALVE FACE AND HOLE DETAILS

U.S.S. Monitor Steam Engine

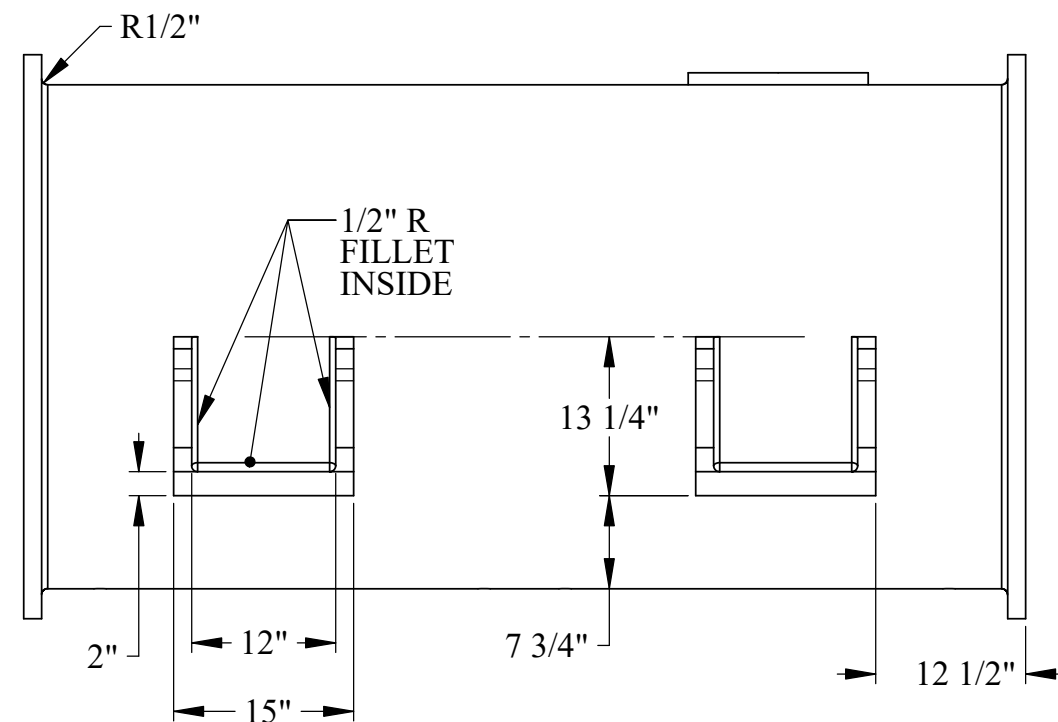
Material Cast Iron	Drawn By - Date RWC 10-2018	Sub-Assembly Cylinder Assembly
Weight (Lbs) 5088.961	Description Cylinder SHEET 2 OF 4	
Scale 1:8		
Part # C 2		



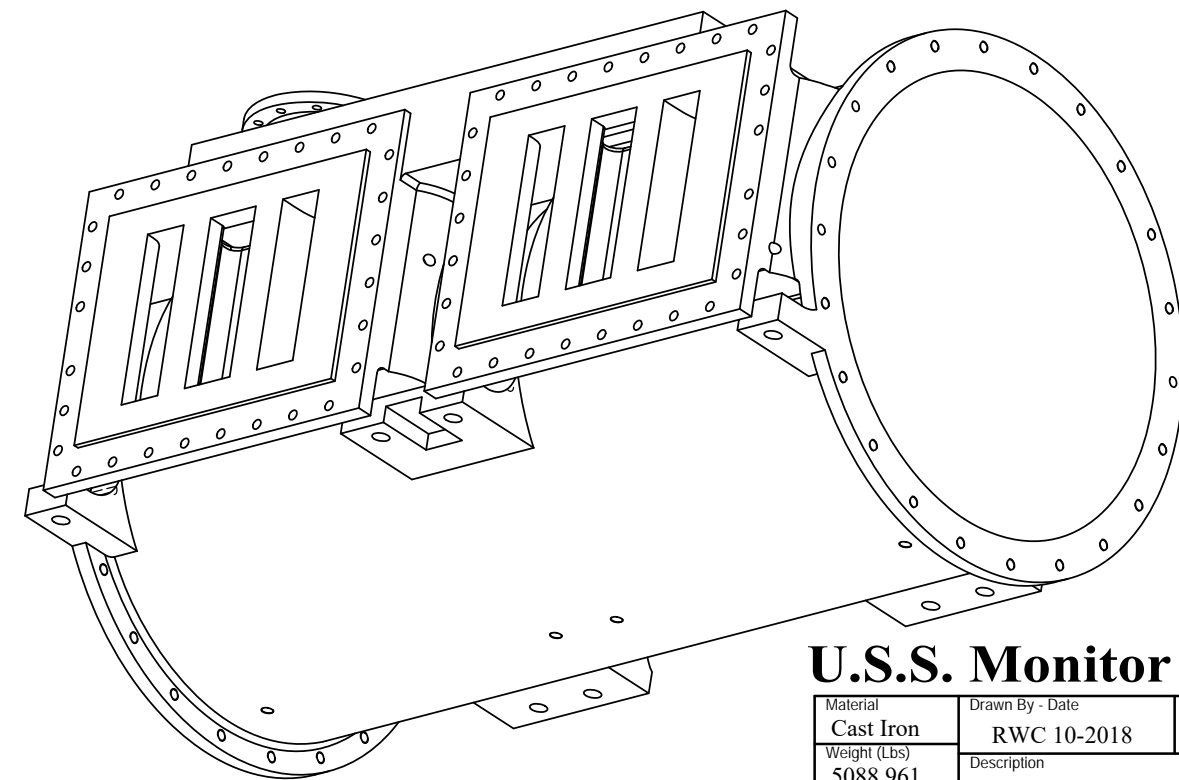
TOP VIEW



BOTTOM VIEW-CYLINDER MOUNTS AND KEYWAY



VIEW FROM AFT

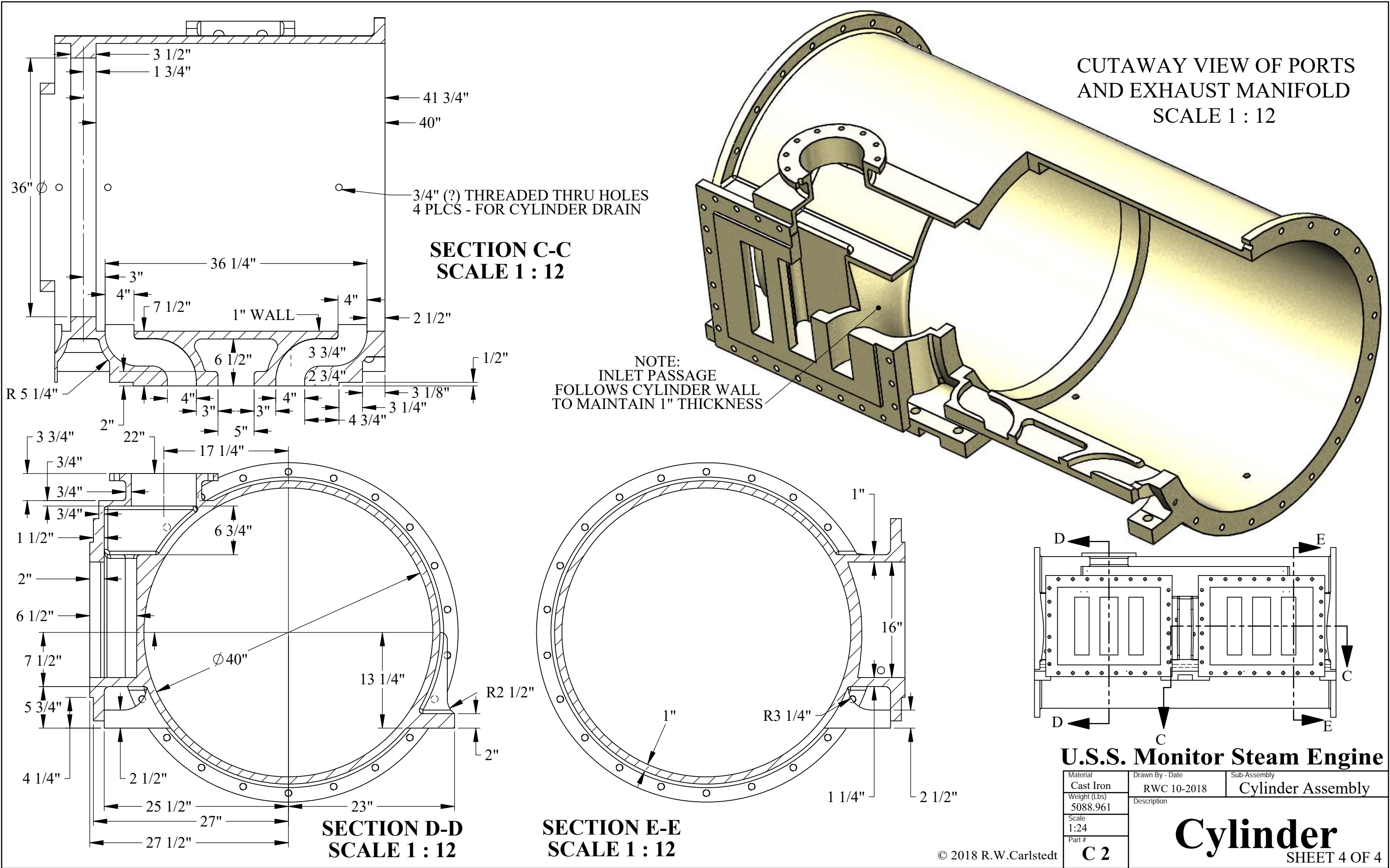


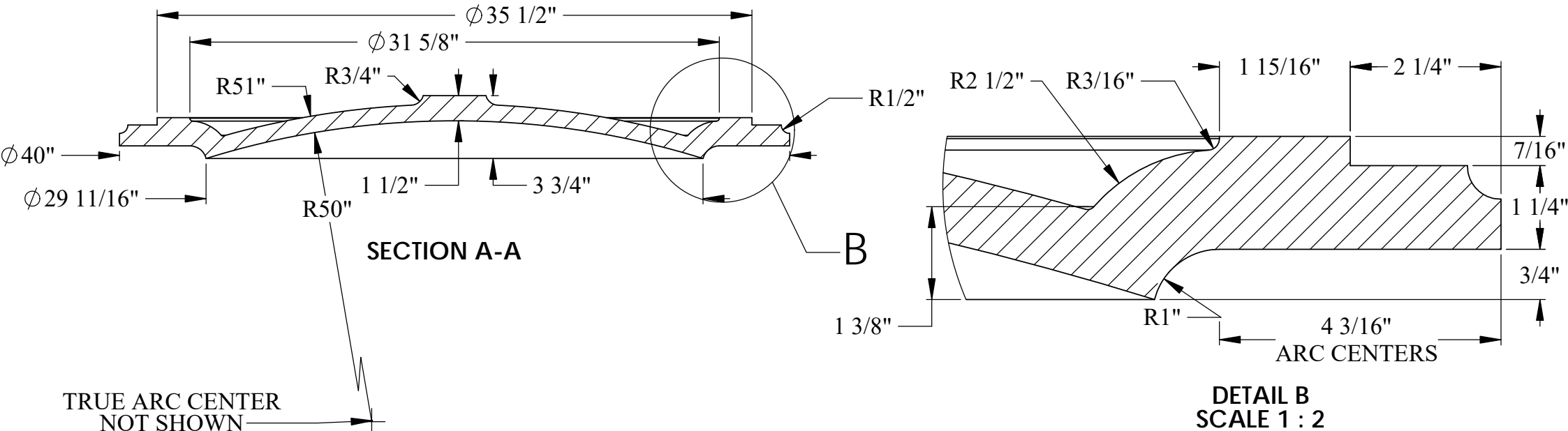
U.S.S. Monitor Steam Engine

Material Cast Iron	Drawn By - Date RWC 10-2018	Sub-Assembly Cylinder Assembly
Weight (Lbs) 5088.961	<div style="text-align: center;"> <h1>Cylinder</h1> <h2>SHEET 3 OF 4</h2> </div>	
Scale 1:16		
Part # C 2		

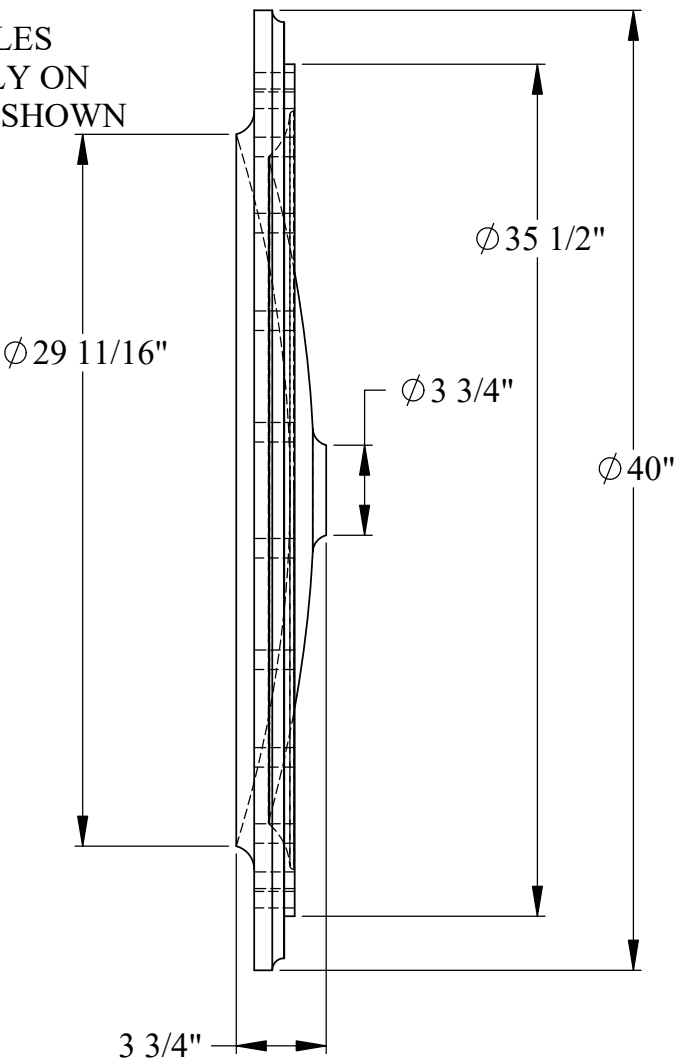
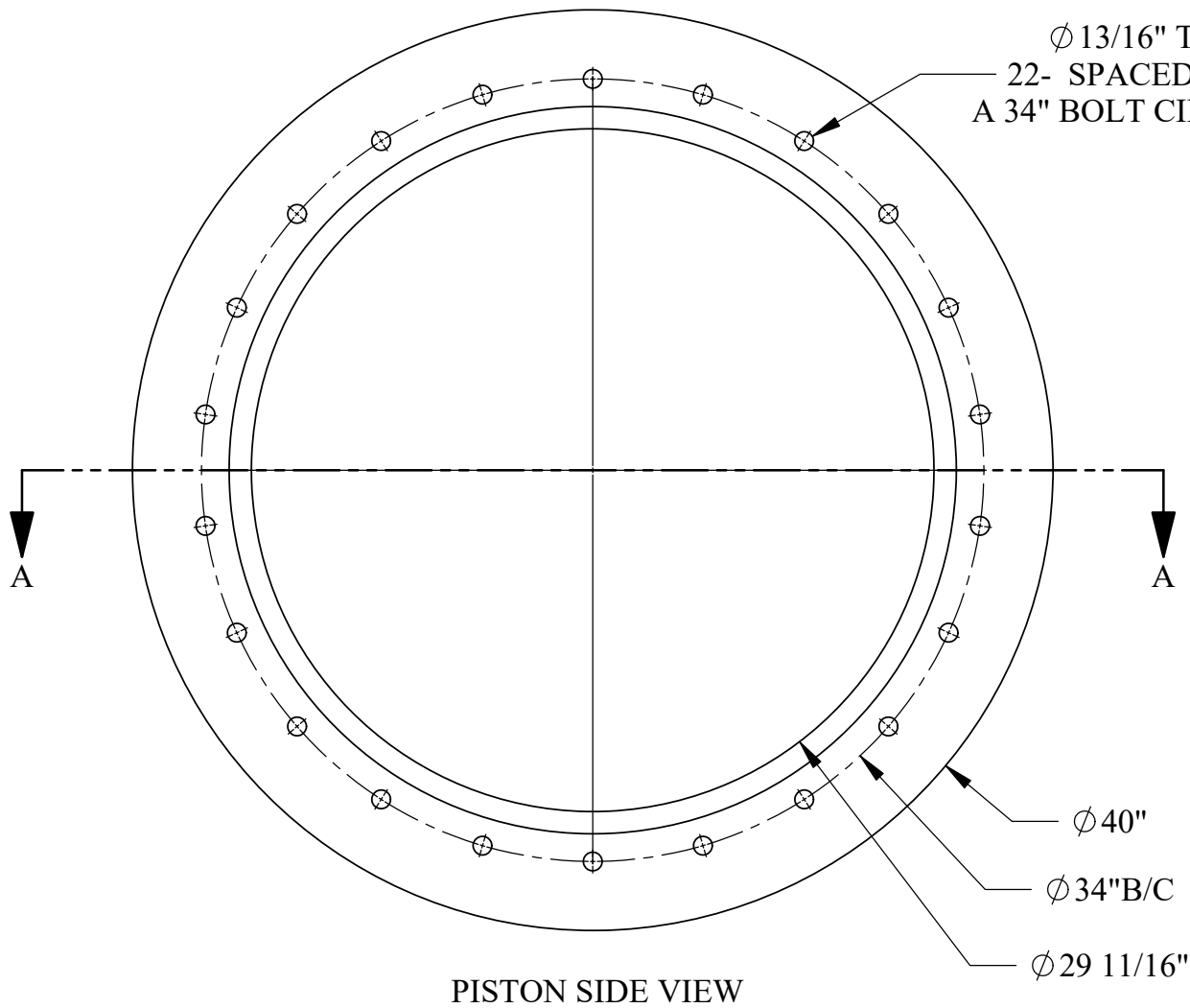
Cylinder

SHEET 3 OF 4



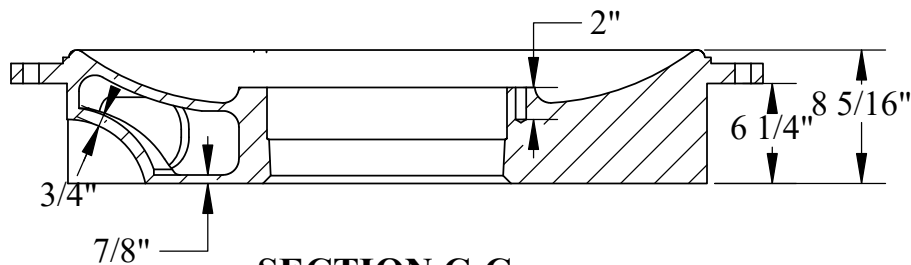


SCALE 1: 10



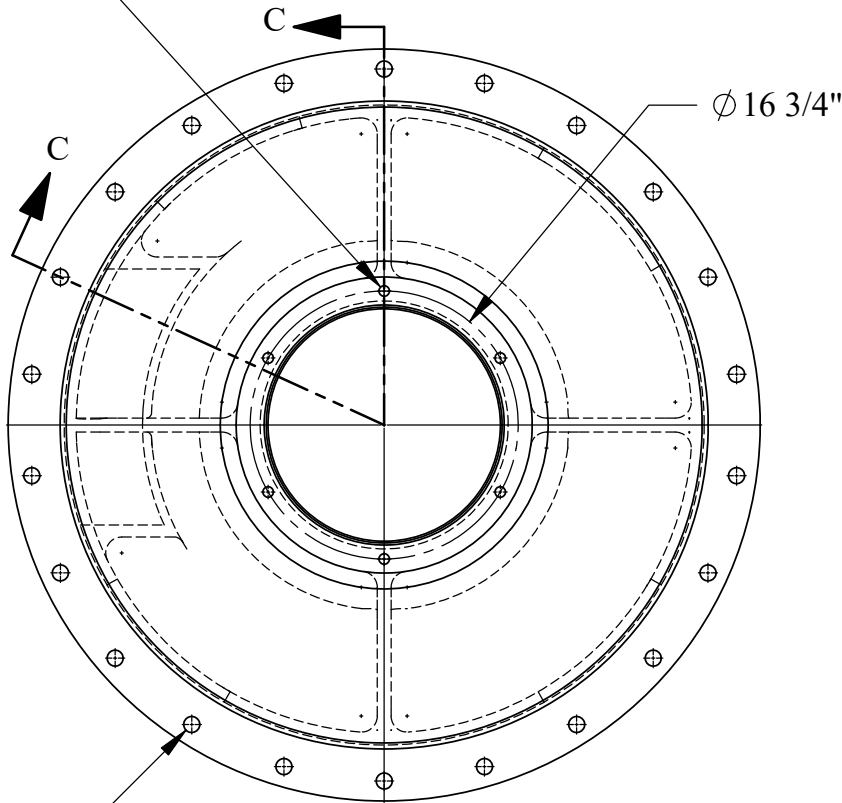
U.S.S. Monitor Steam Engine		
Material Cast Iron	Drawn By - Date RWC 12-2018	Sub-Assembly Cylinder Assembly
Weight (Lbs) 403.08	Cylinder -Center Head	
Scale 1:8		
Part # C 3		

SECTION A-A
LOCATED ON SHEET 2
FOR DETAILS OF BORE
AND PROFILE



SECTION C-C

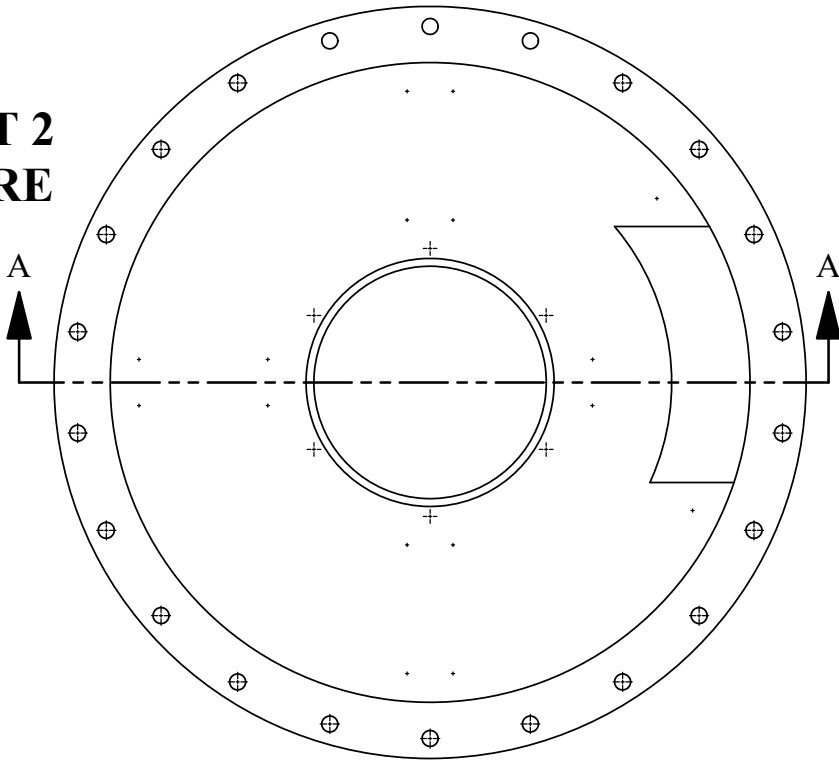
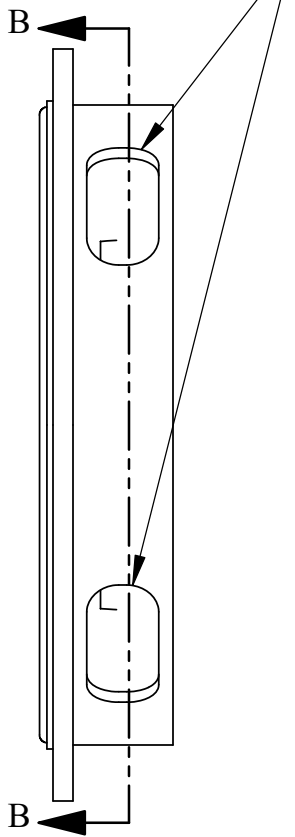
Ø 3/4" TAPPED HOLES- 2" DEEP
6 SPACED EQUALLY ON A 16-3/4" B/C



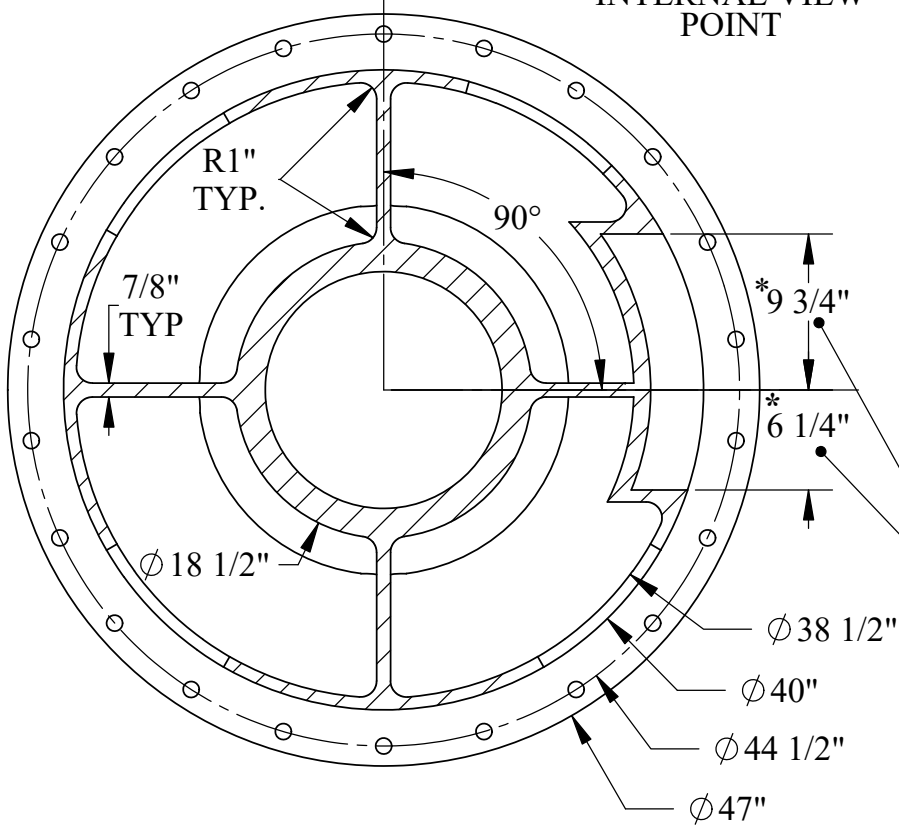
Ø 1"- 22 THRU HOLES
EQUALLY SPACED AND
POSITIONED AS SHOWN
ON A 44-1/2" B/C

EXTERNAL VIEW OF PORT HEAD

CASTING ACCESS PORTS (4)



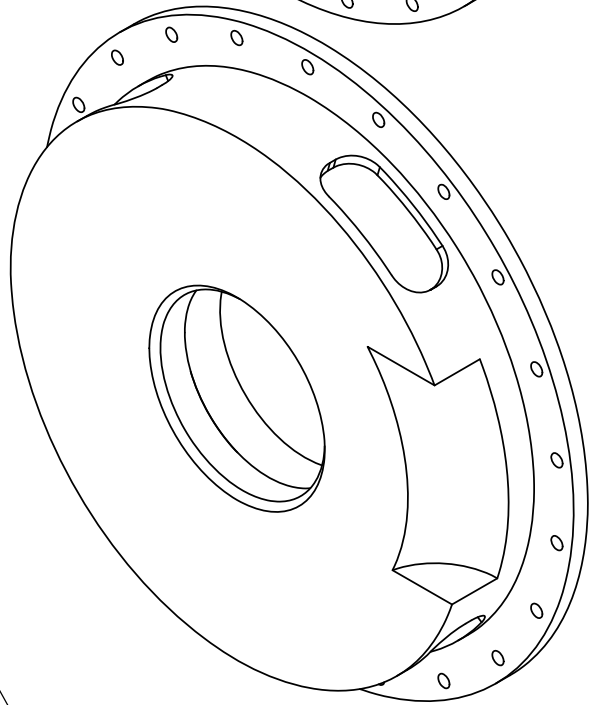
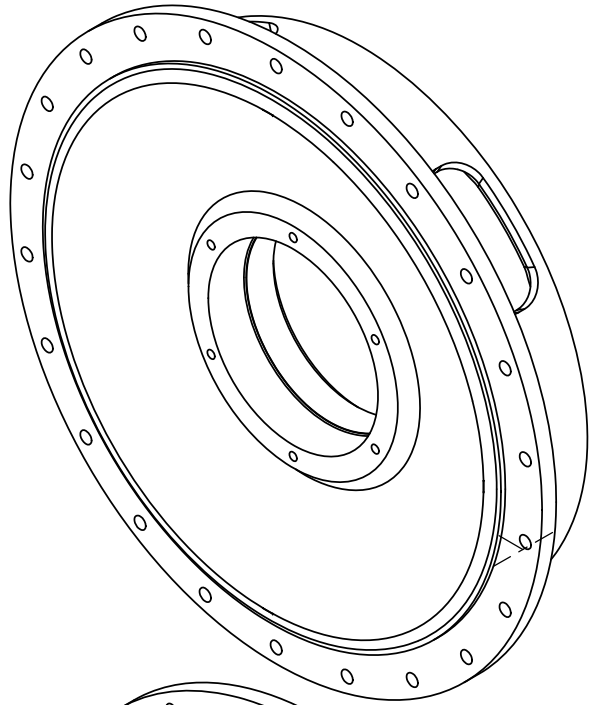
INTERNAL VIEW
POINT



SECTION B-B

SHOWING PROBABLE 4 WEB LOCATION-
THICKNESS CALL OUTS AND ACCESS PORTS
REFERENCED IN PASSIC DRAWING 2-3-33
AS VIEWED FROM INSIDE CYLINDER

* NOTE:
VALVE CHEST C/L
IS 1-3/4" ABOVE
CYLINDER C/L



U.S.S. Monitor Steam Engine

Material Cast Iron	Drawn By - Date RWC 10-2018	Sub-Assembly Cylinder Assembly
Weight (Lbs) 835.486	Description Cylinder Head- Port	
Scale 1:12		
Part # C 4		
© 2018 R.W.Carlstedt		SHEET 1 OF 2